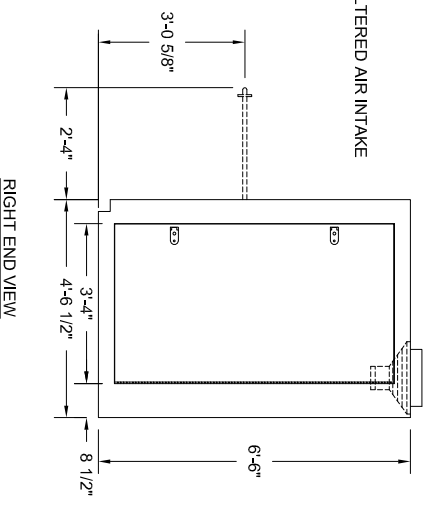
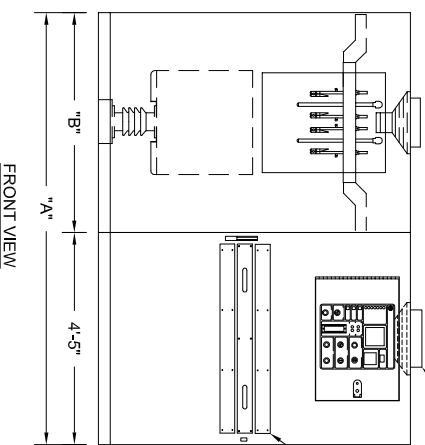
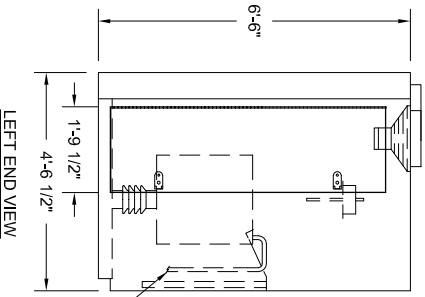
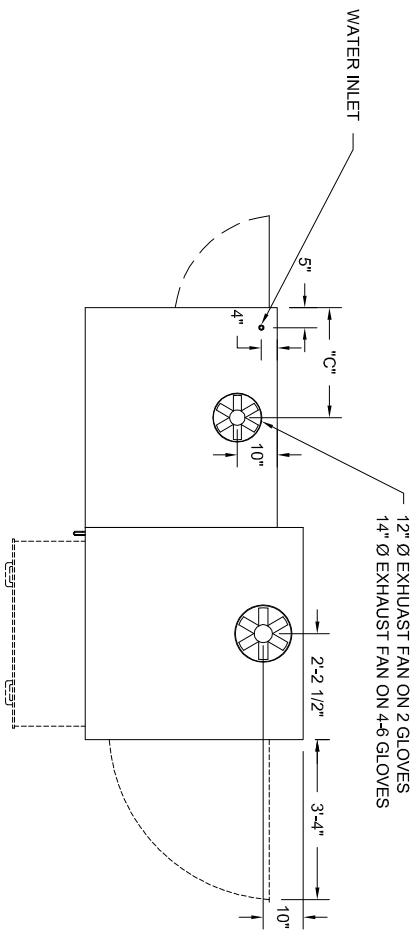


FAN SIZE	CFM RATING	DUCTWORK
12"	1390	TO BE VENTED OUTSIDE
14"	2040	TO BE VENTED OUTSIDE



MODEL:	NO. OF GLOVES:	"A"	"B"	"C"	SHIPPING WEIGHT
GT5021	2	8' - 2"	4' - 7"	2' - 3 1/2"	2400 LBS.
GT5041	4	9' - 8"	6' - 1"	3' - 1/2"	2700 LBS.
GT5061	6	11' - 2"	7' - 7"	3' - 9 1/2"	3000 LBS.

**- REFERENCES AND REVISIONS -**

REV.	DATE:	GENERAL REVISION	REMARKS:	BY:
A	7-91	7-91	GENERAL REVISION	BG
B	8-91	44 IN. DM WAS 44 1/2		BG
C	12-94	UPDATED ALL SYSTEMS TO 50KWAC		TRW
D	5-5-2009	COMPLETE UPDATE TO "DM" SERIES		BWF

**HANCO INTERNATIONAL**  
 DIVISION OF THE HANNON COMPANY  
 1605 WAYNESBURG DR. SE  
 CANTON, OHIO, U.S.A. 44707  
 PH: 330/456-4728 FAX: 330/456-3323

TITLE:  
**INTEGRATED STYLE GL/S/BKT TESTER**  
**1-DRAWER 46" MAX BLANKET**

DATE: **7-11-90** SCALE: **1/4" = 1'** SHEET: **1 OF 1**  
 DRAWN BY: **R.B.** SERIES: **DA** DRAWING NO.: **A8536**

This drawing is proprietary information and considered intellectual property of Hanco International. Unauthorized reproducing, electronic transmission, or distribution without written authorization of Hanco International is prohibited.

- NOTE 1: 240 VOLT, 60Hz, SINGLE PHASE POWER ENTRANCE. (TWO #6 PLUS ONE #2 EARTH GROUND IN 1 1/2" CONDUIT) OTHER VOLTAGE INPUTS AVAILABLE UPON REQUEST.
- NOTE 2: 3/8" NPT AIR INLET (60 PSI MINIMUM, BULKHEAD FITTING PROVIDED) FILTER, REGULATOR, AND SHUT OFF PROVIDED ON SUBPANEL INSIDE POWER PANEL CABINET.
- NOTE 3: 1/2" NPT WATER INLET (60 PSI MINIMUM) BULKHEAD FITTING PROVIDED
- NOTE 4: THE FLOOR DRAIN MAY BE LOCATED ANYWHERE WITHIN 25 FEET OF THE TEST TANK BUT GENERALLY IS LOCATED WITHIN THE TEST COMPARTMENT. BE SURE TO SECURE THE END OF THE DRAIN LINE TO PREVENT WHIPPING.

30 FT. 3/4" DRAIN HOSE PROVIDED WITH MACHINE. TO BE RUN TO CUSTOMER FLOOR DRAIN